

WALES EDITION



RULES

To play 'Dobble - Welsh Edition' divide cards equally.
(As this version is smaller than the original, this game
is best played as a **2 player game.**)

To begin, reveal one card from the deck.

Players must then turn their first card from their deck
and see if there is a matching symbol.

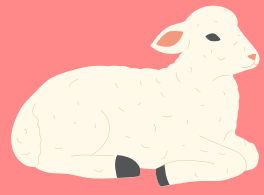
Whoever spots the first symbol in common on both
cards claims the first card.

Their card is then placed down and the search for the
next symbol in common continues.

Players must say the name of the object out loud in
order to proceed.

Whoever has collected the most cards when the deck
runs out, wins!

VOCABULARY



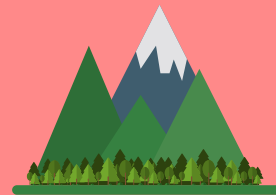
LAMB



MAP OF WALES



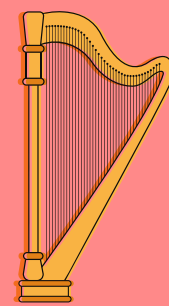
WELSHCAKE



SNOWDONIA



LEEK



HARP



WEATHER



CARDIFF CASTLE



RUGBY



OAK TREE



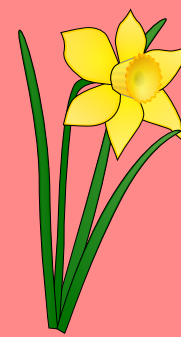
WELSH LADY



CARDIFF



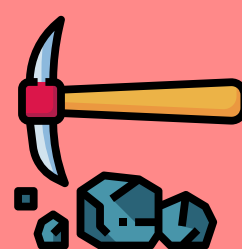
LOVE SPOON



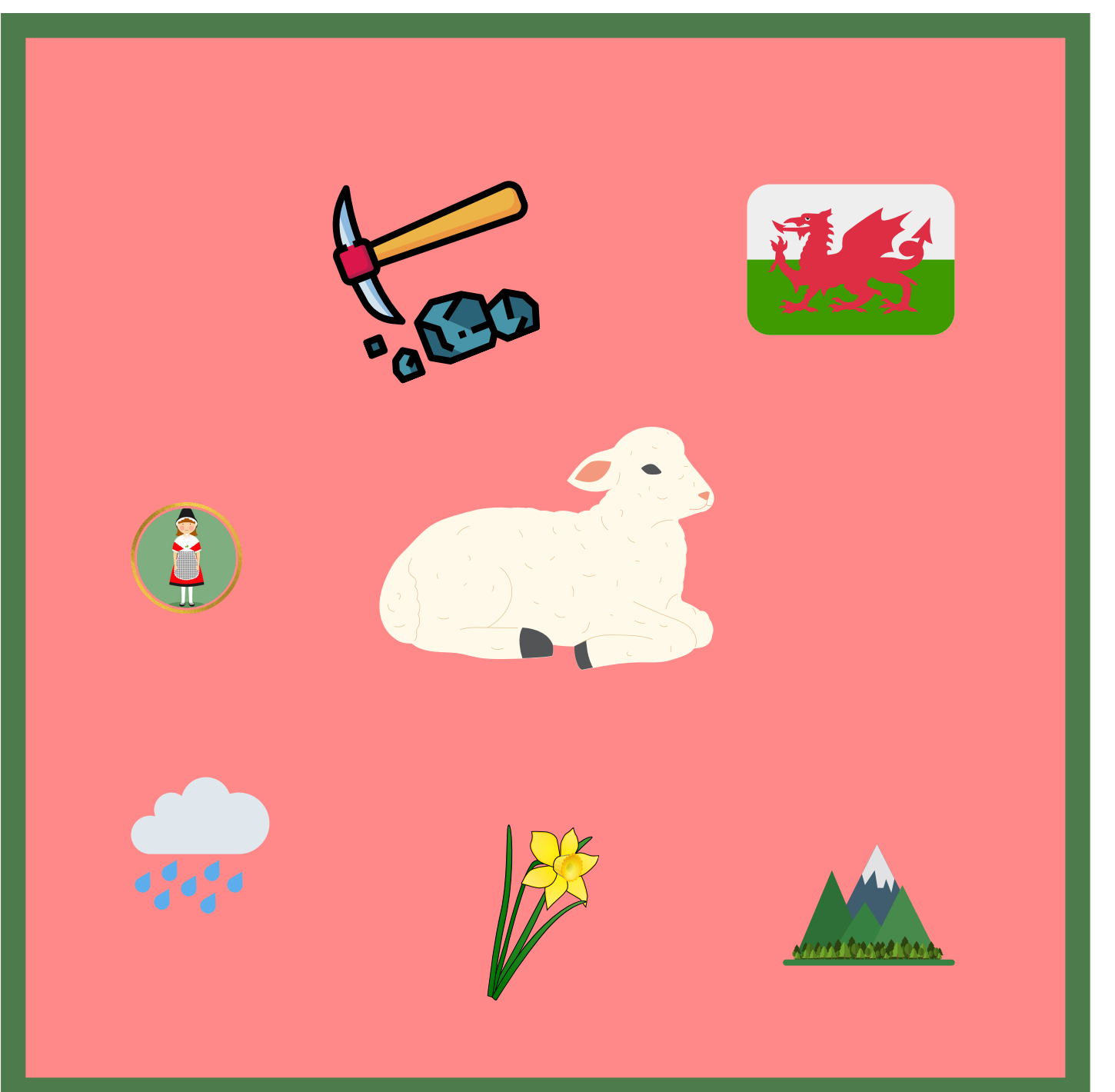
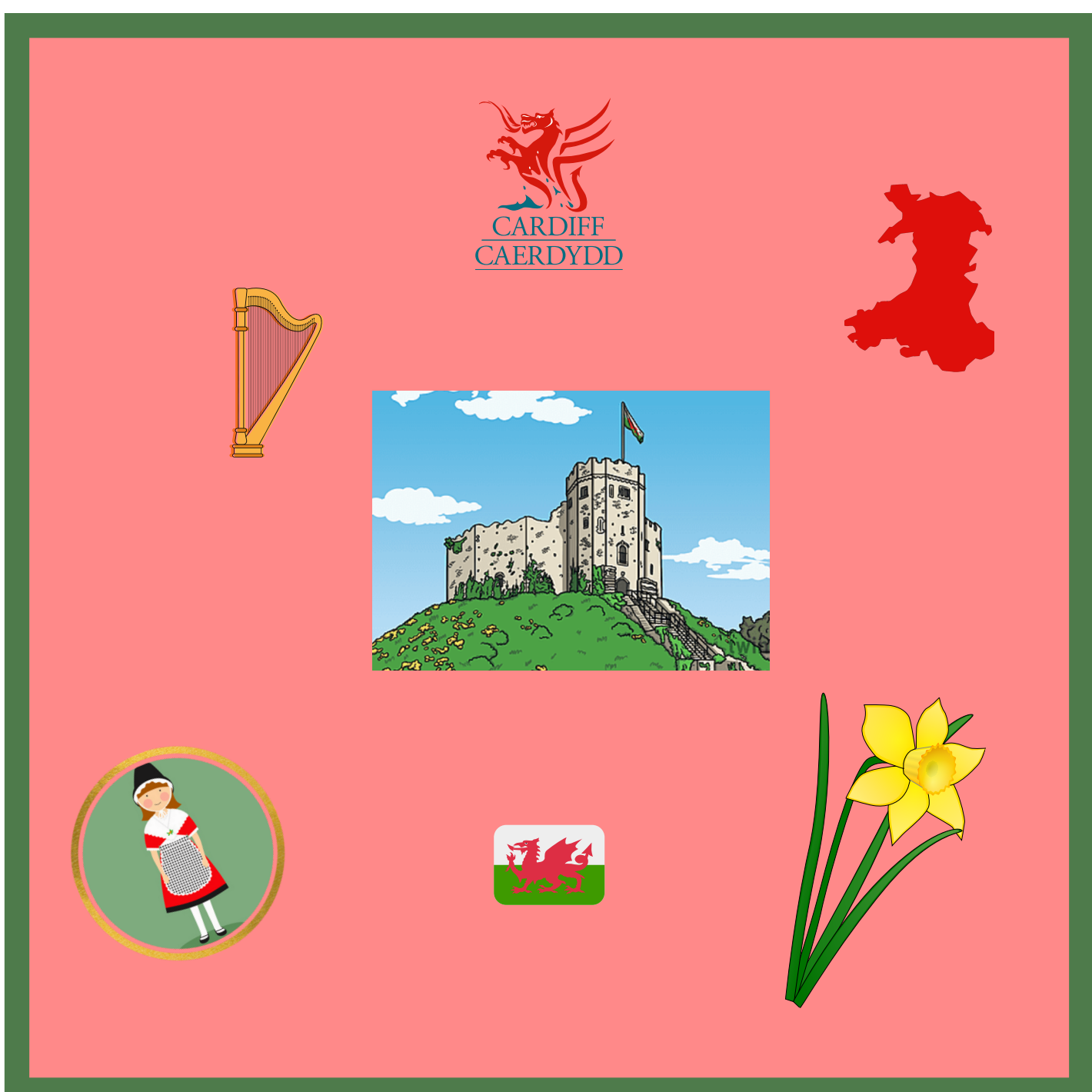
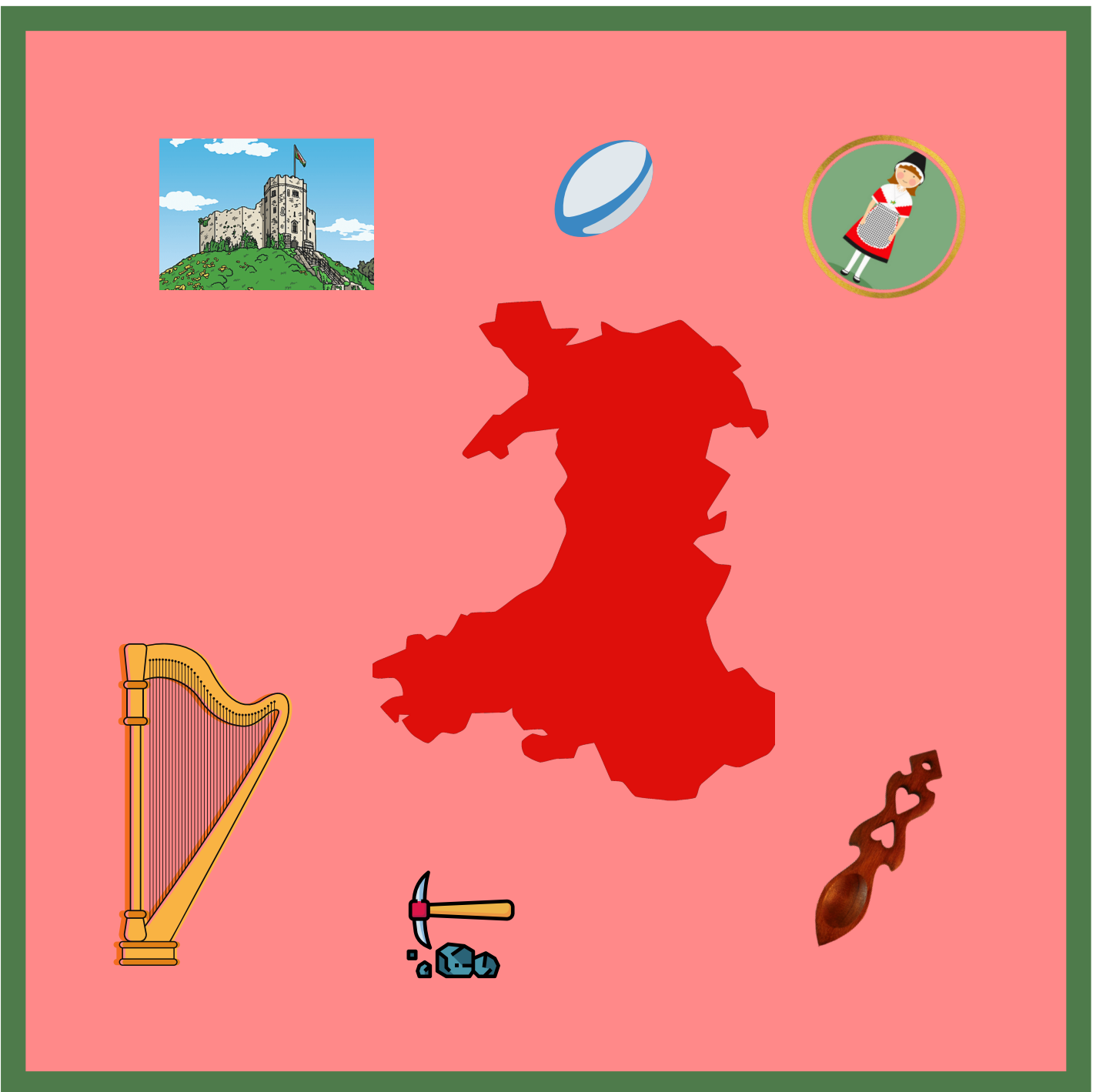
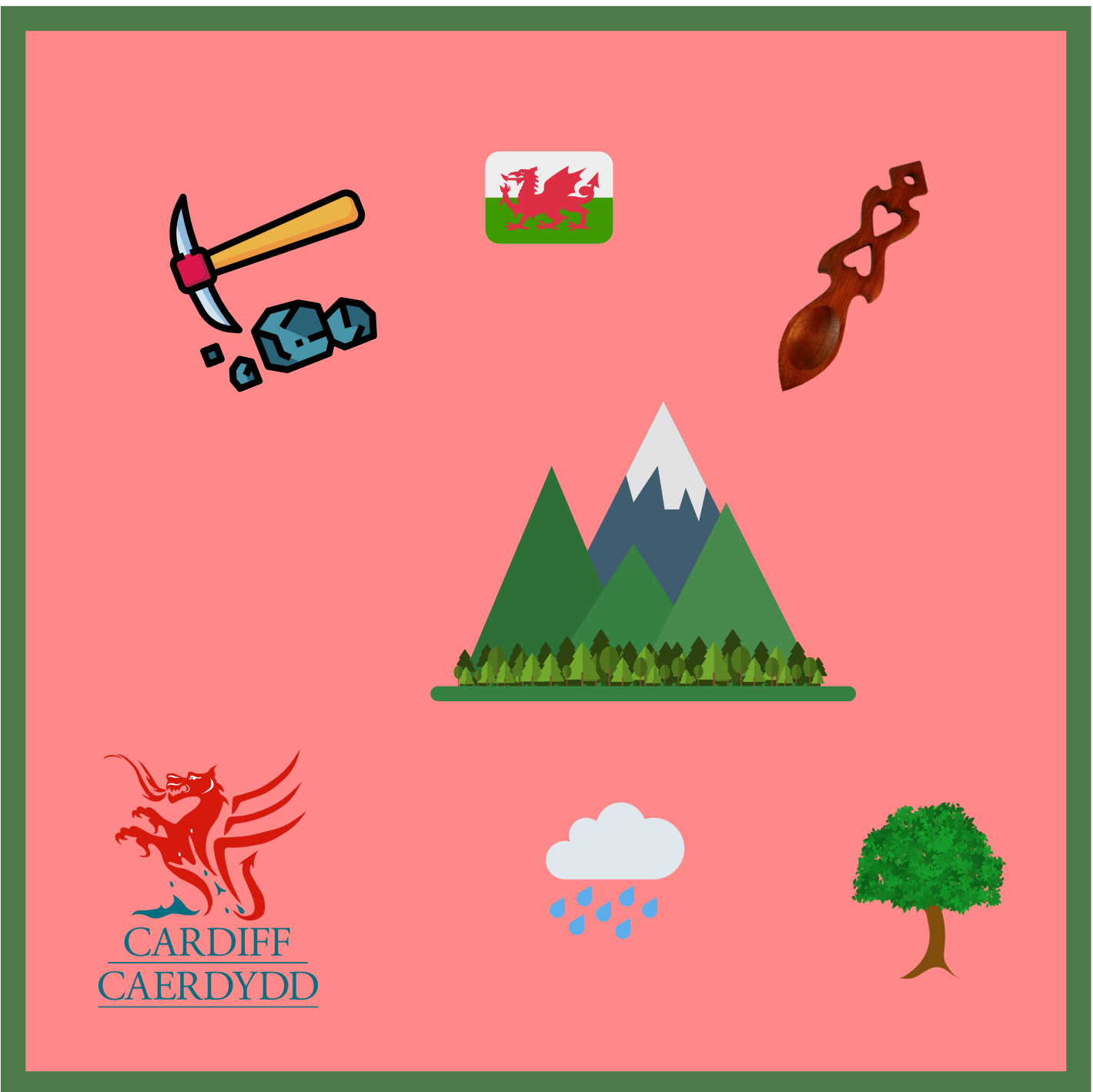
DAFFODIL

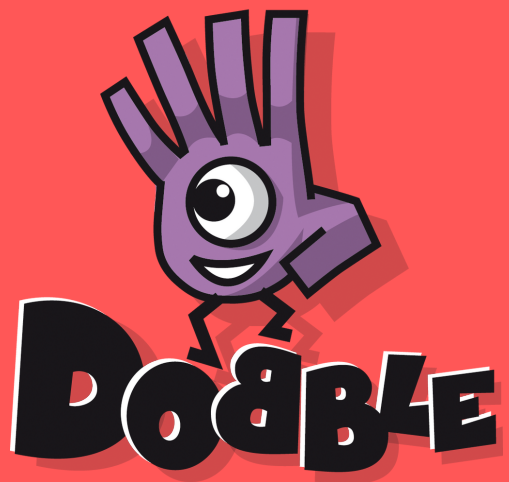


WELSH FLAG

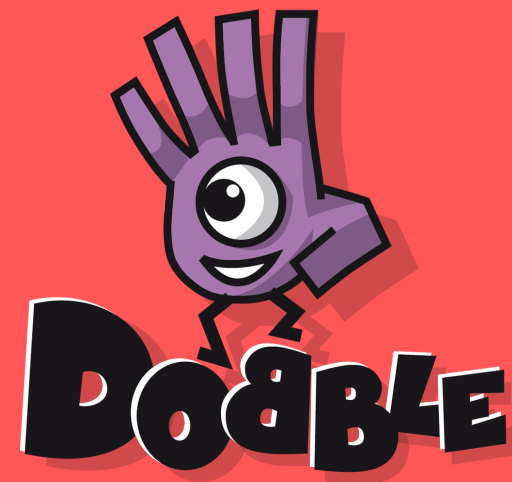


MINING

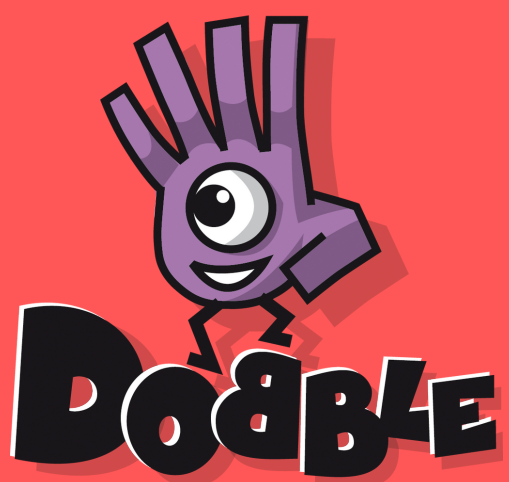




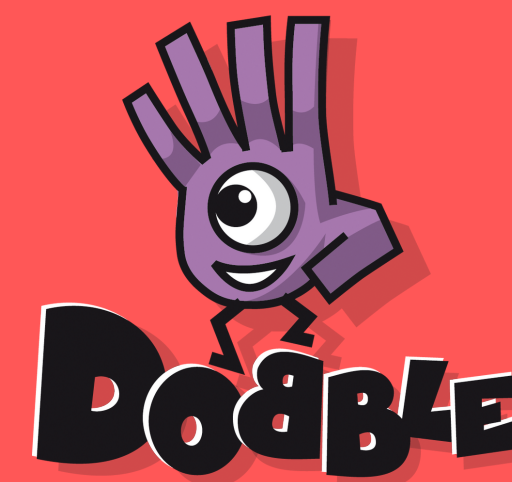
WALES
EDITION



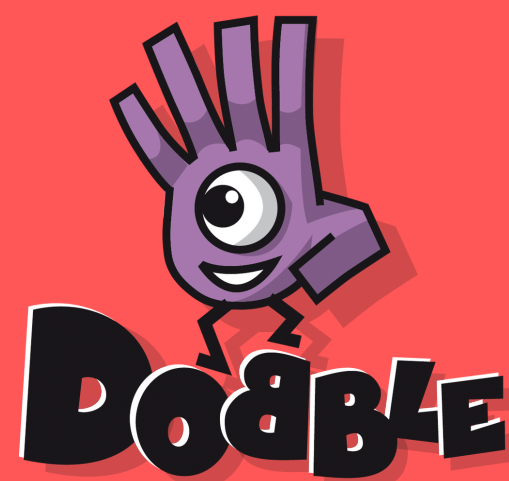
WALES
EDITION



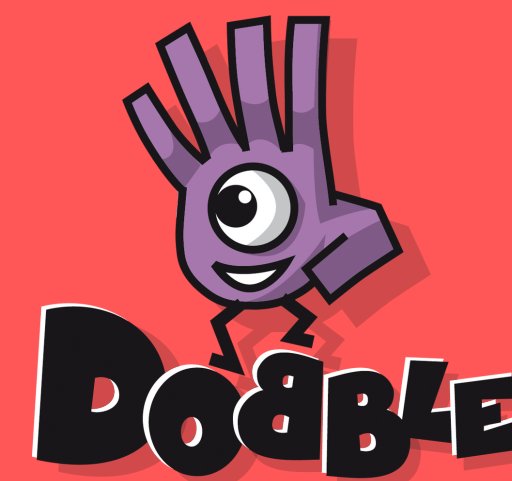
WALES
EDITION



WALES
EDITION

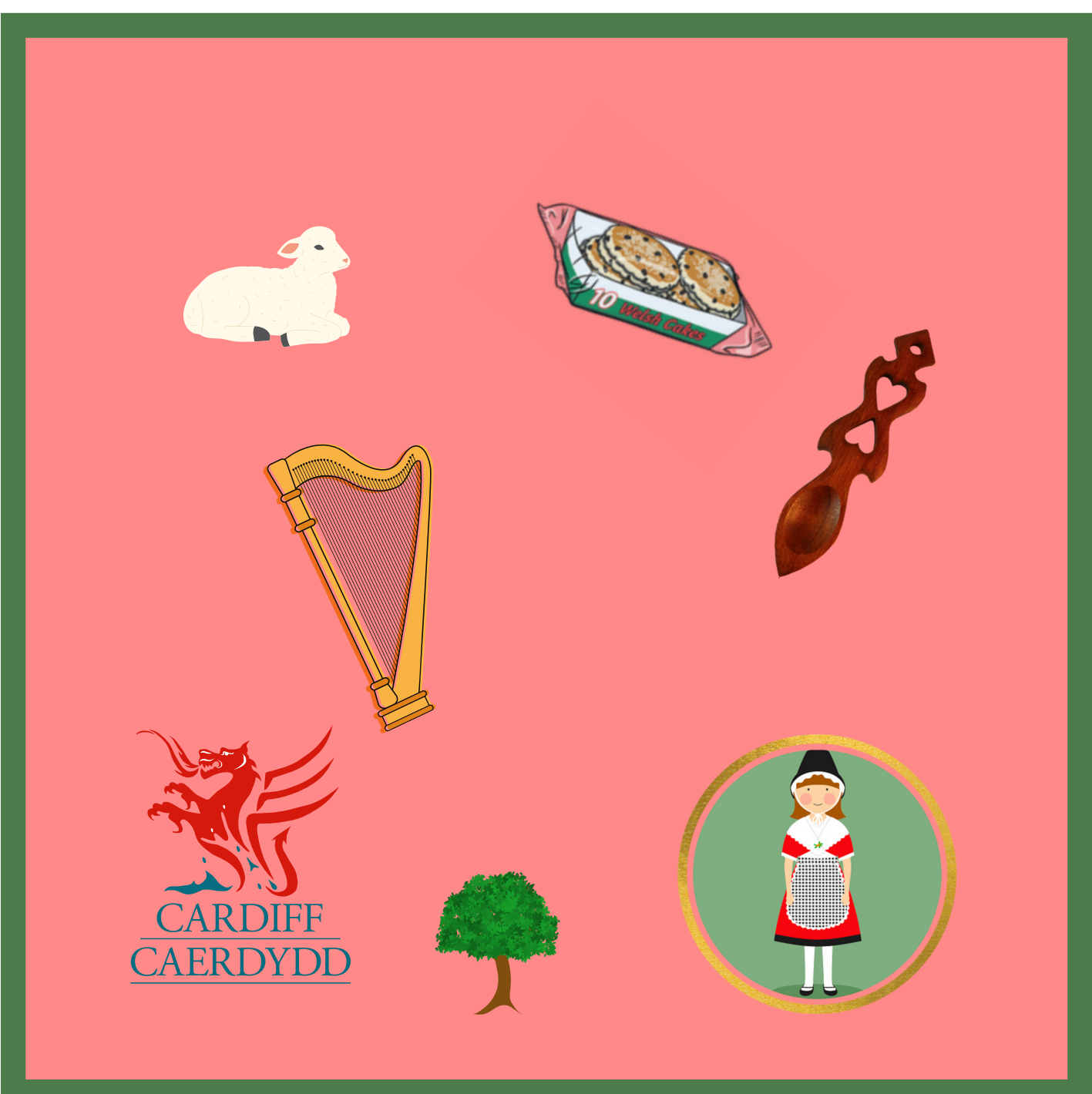
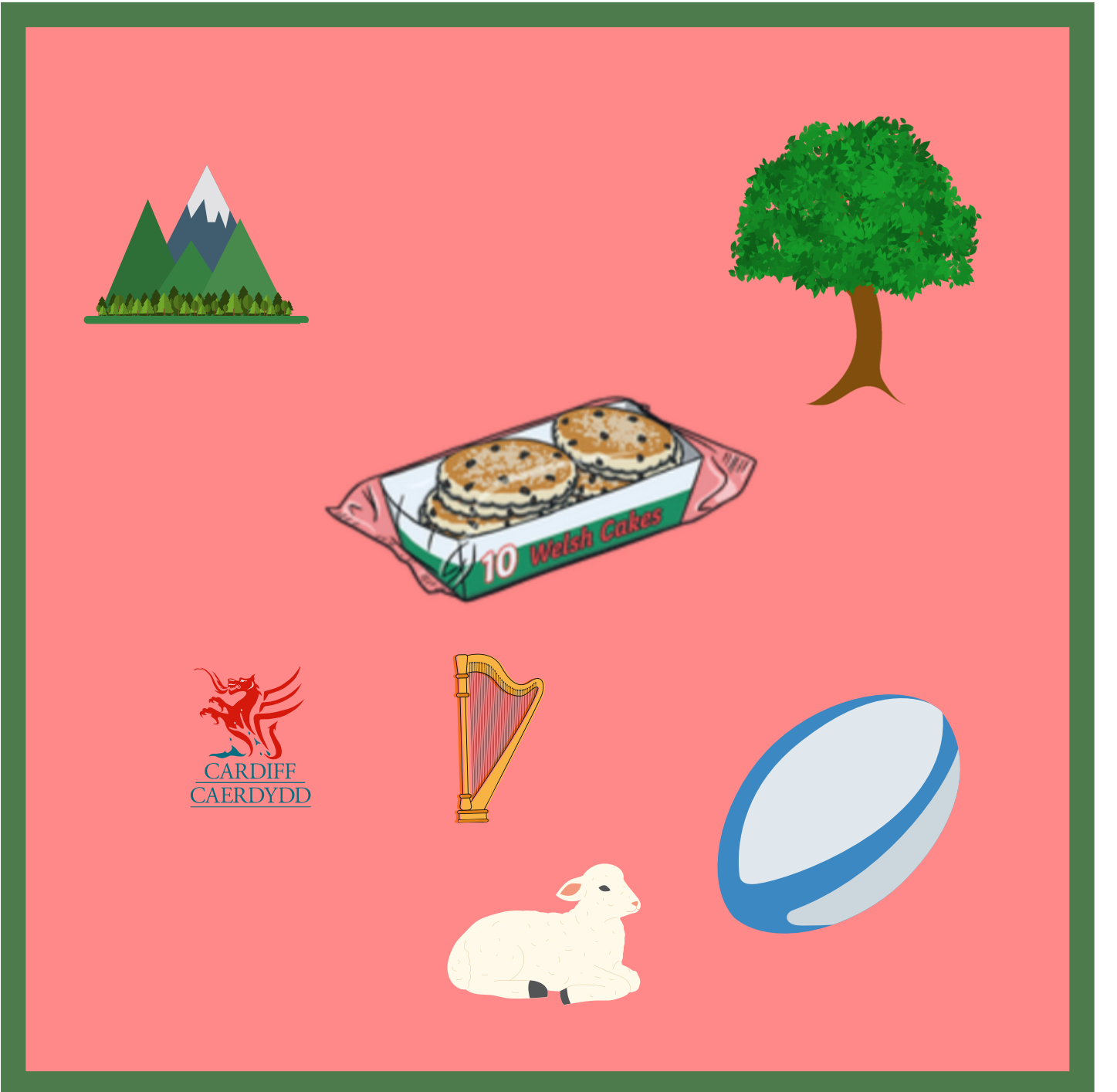
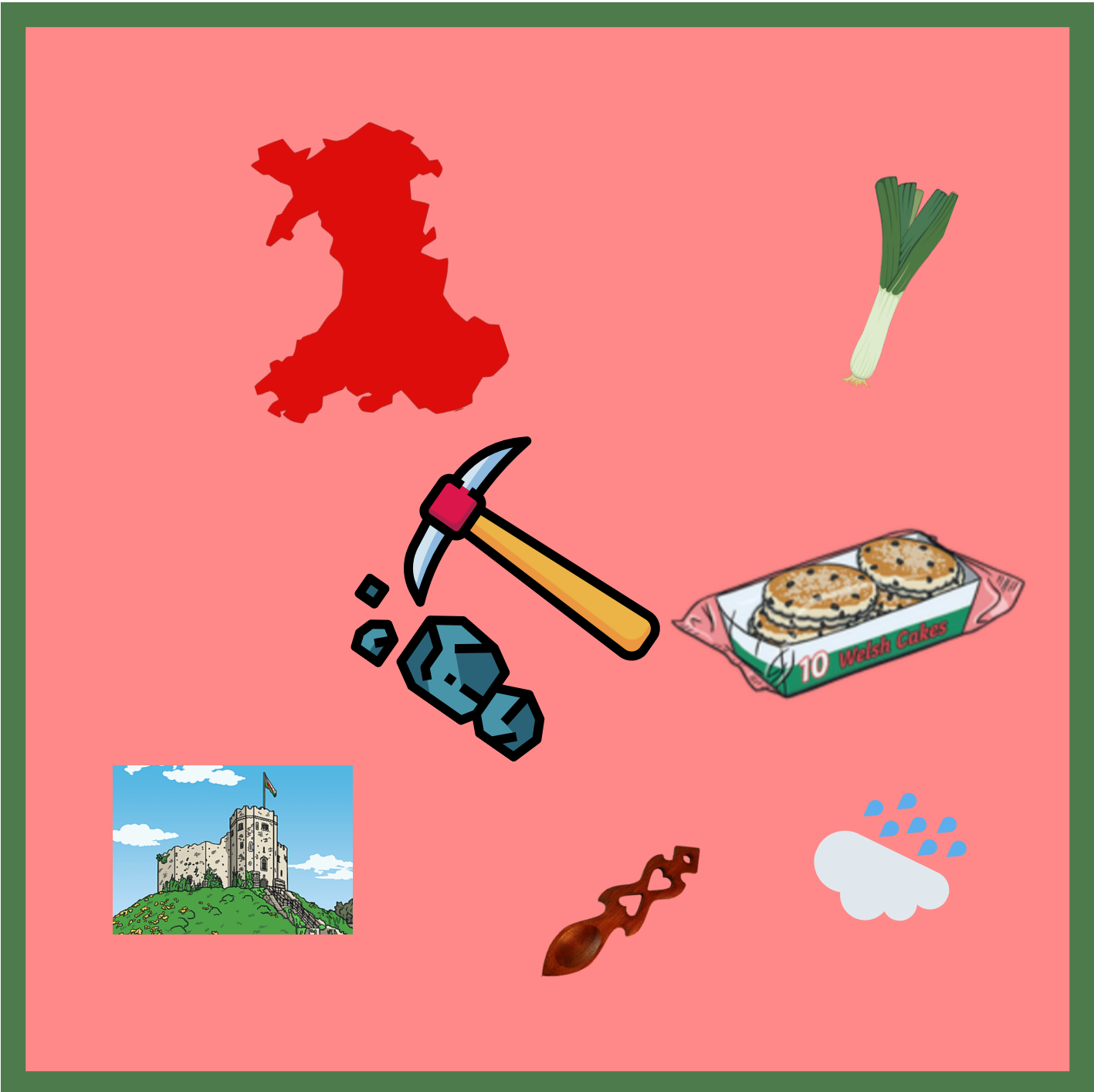
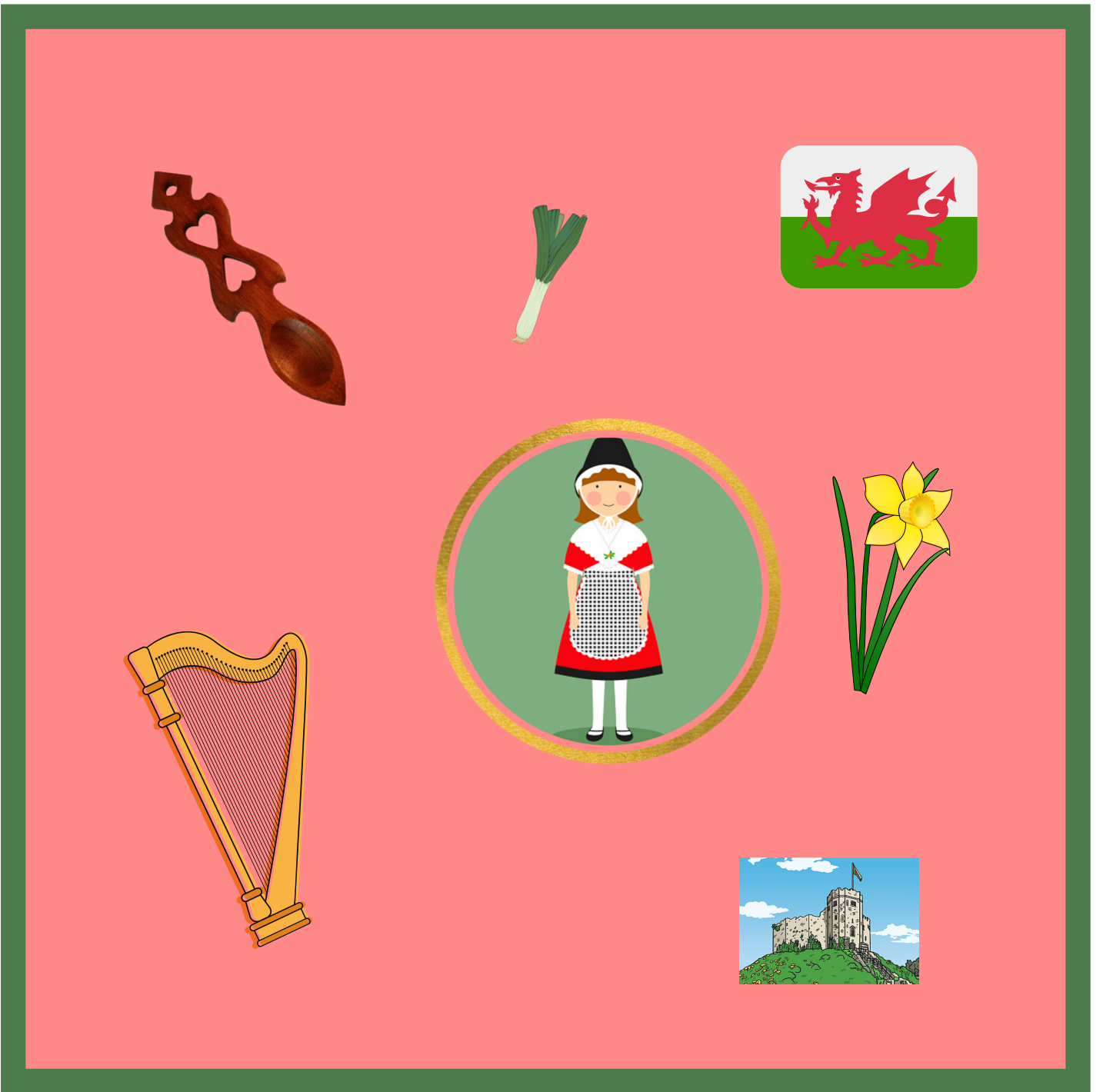


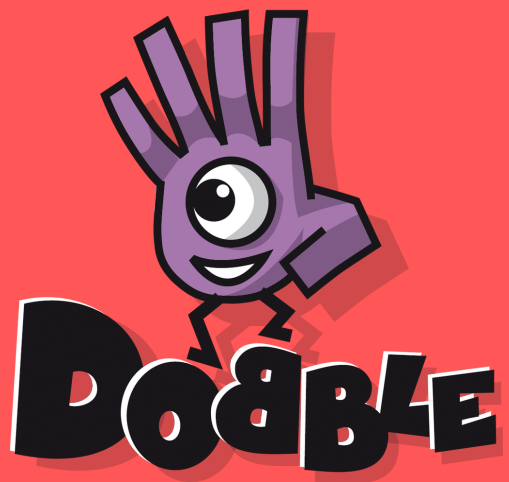
WALES
EDITION



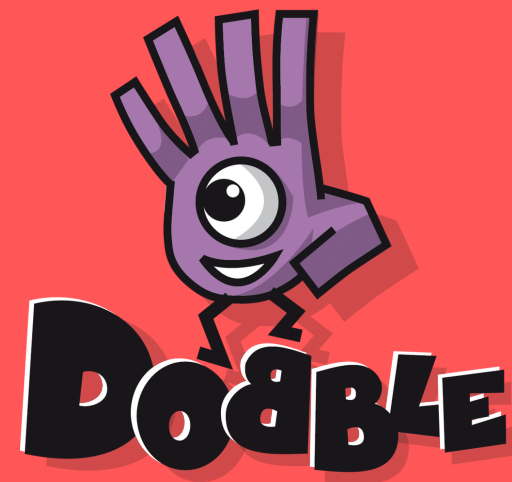
WALES
EDITION



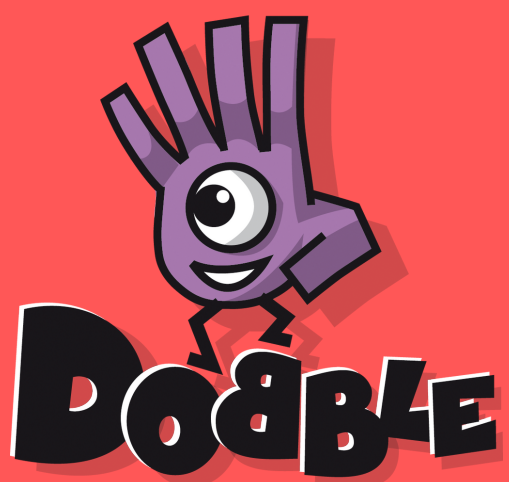




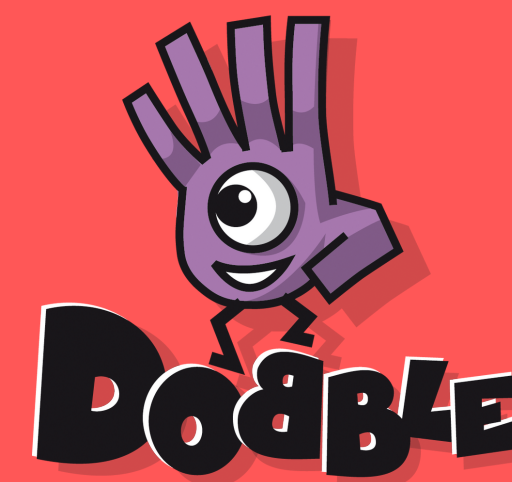
WALES
EDITION



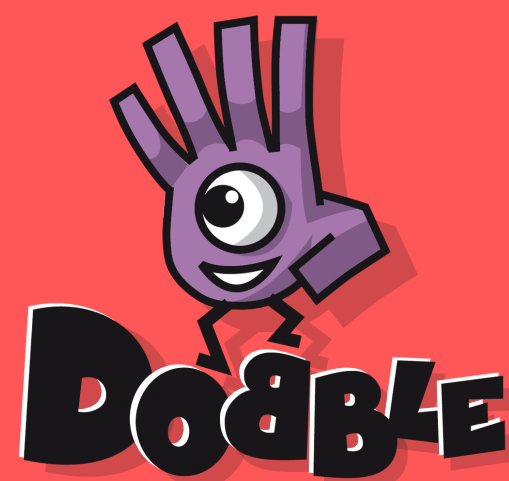
WALES
EDITION



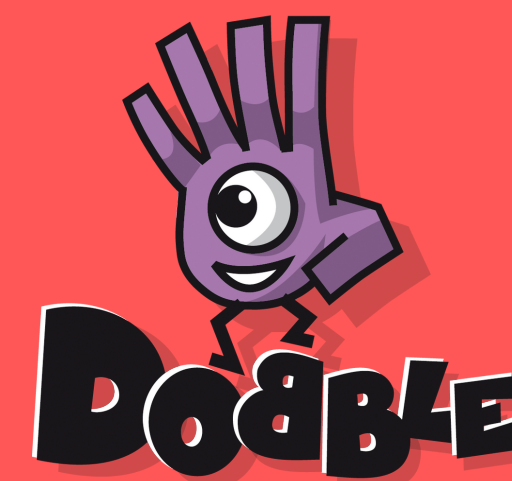
WALES
EDITION



WALES
EDITION

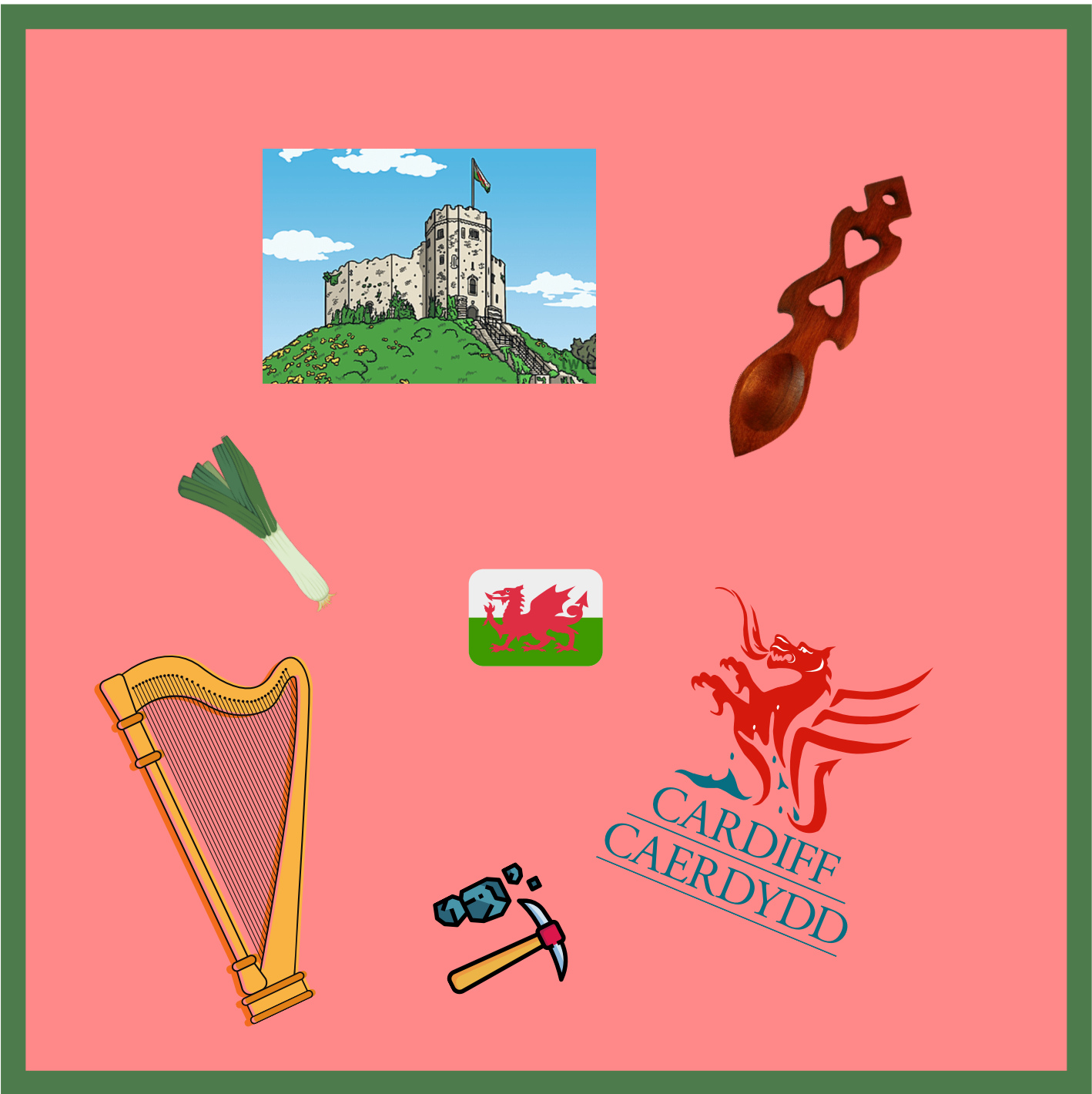


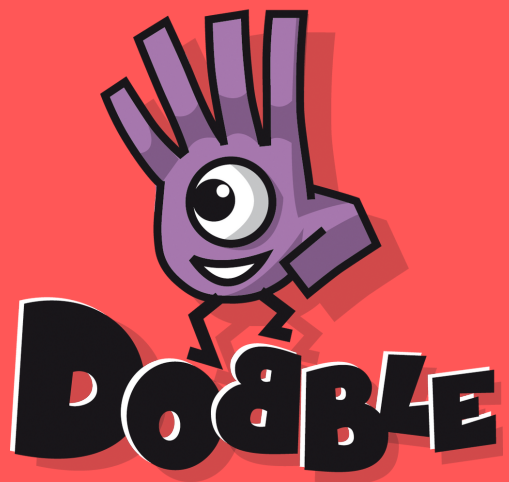
WALES
EDITION



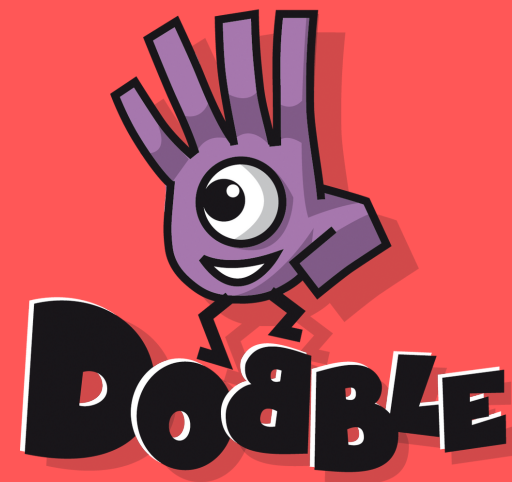
WALES
EDITION



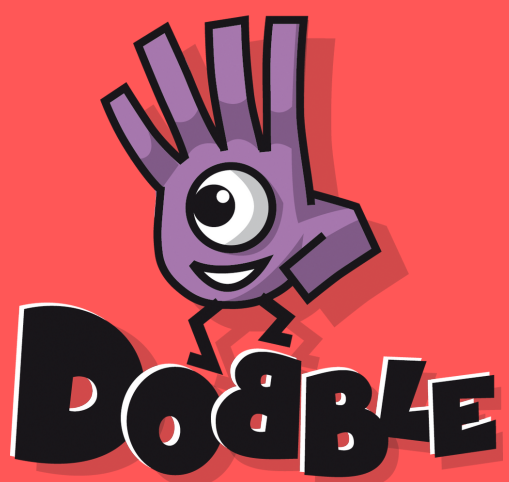




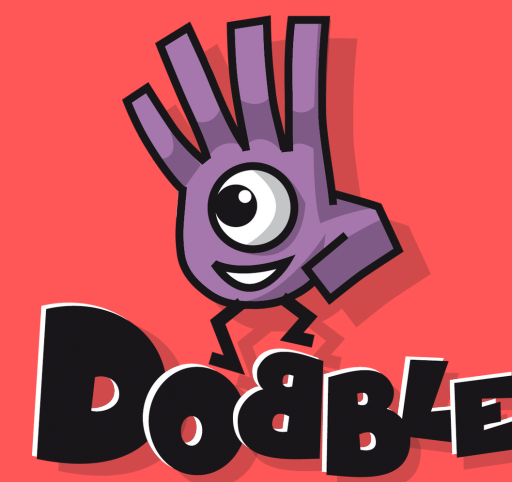
WALES
EDITION



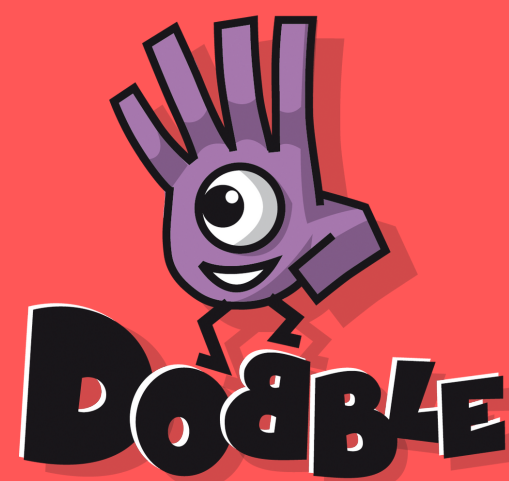
WALES
EDITION



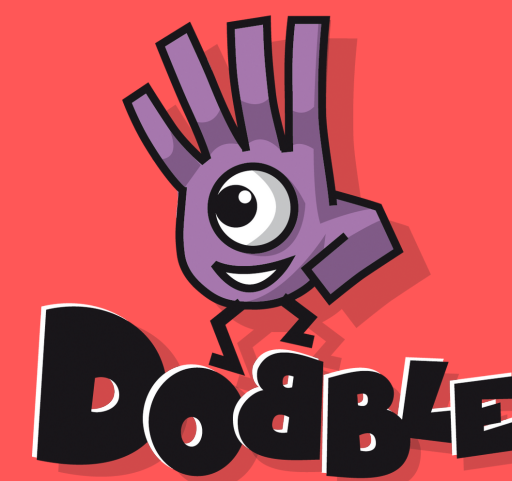
WALES
EDITION



WALES
EDITION

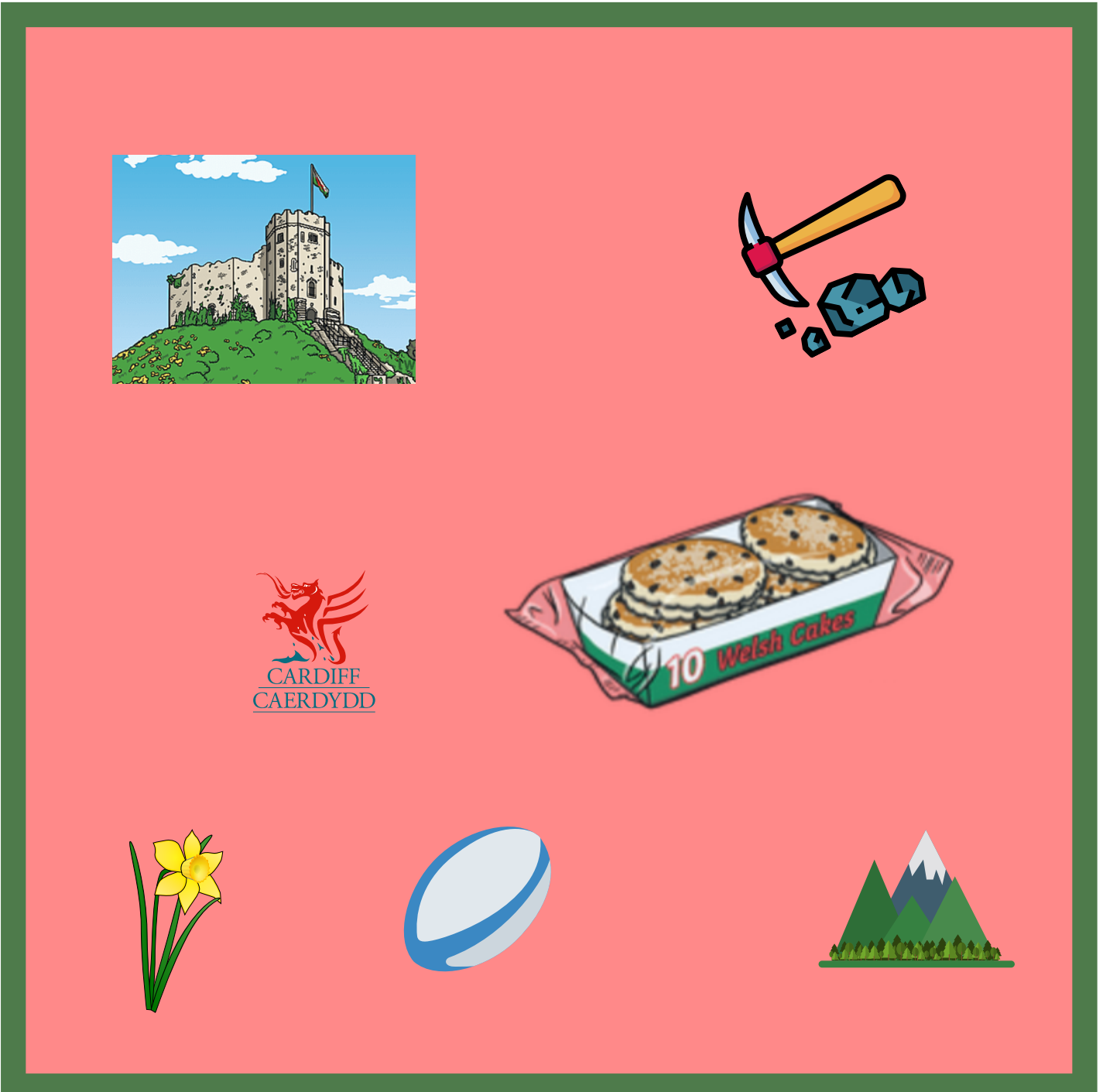
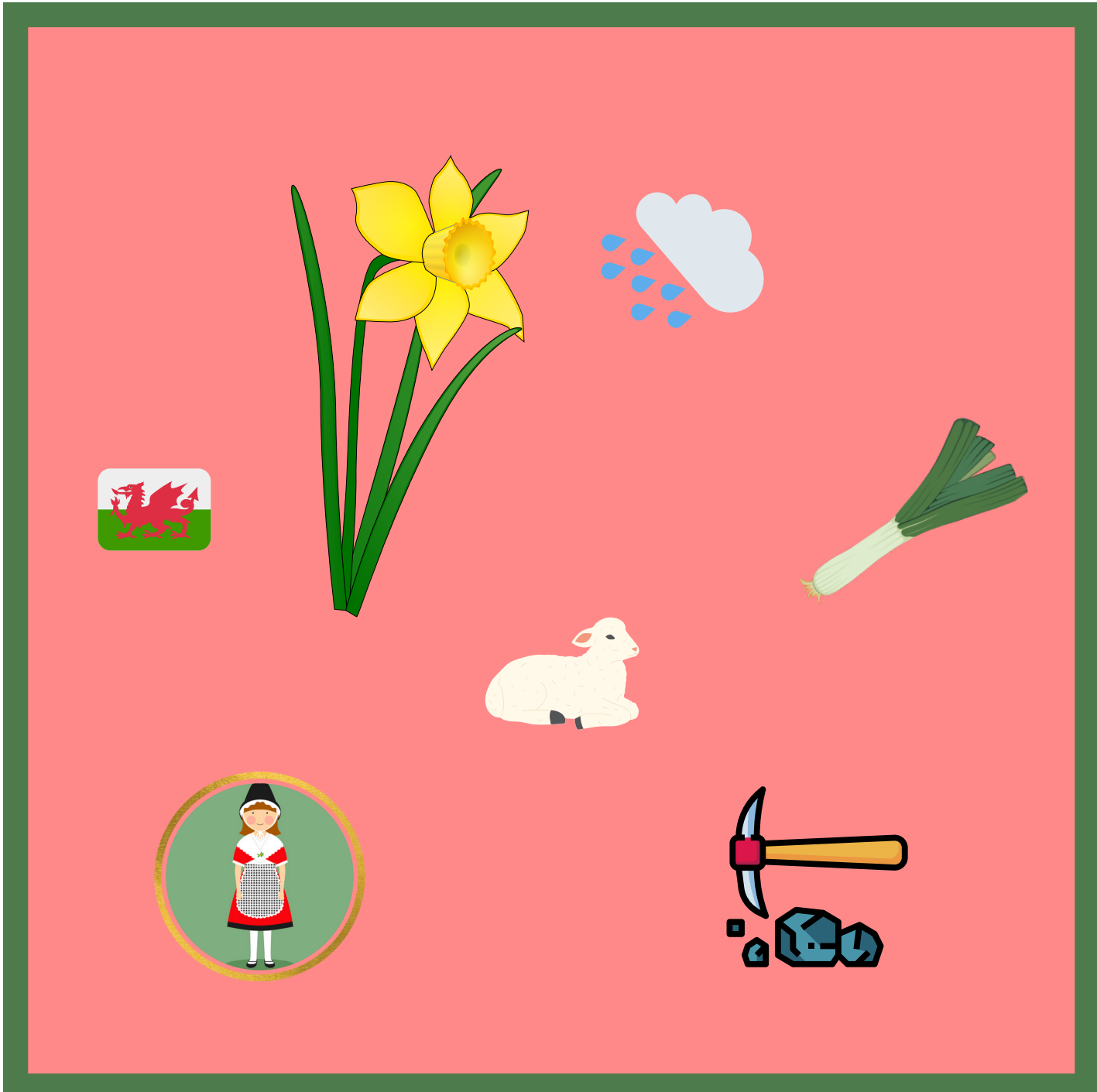
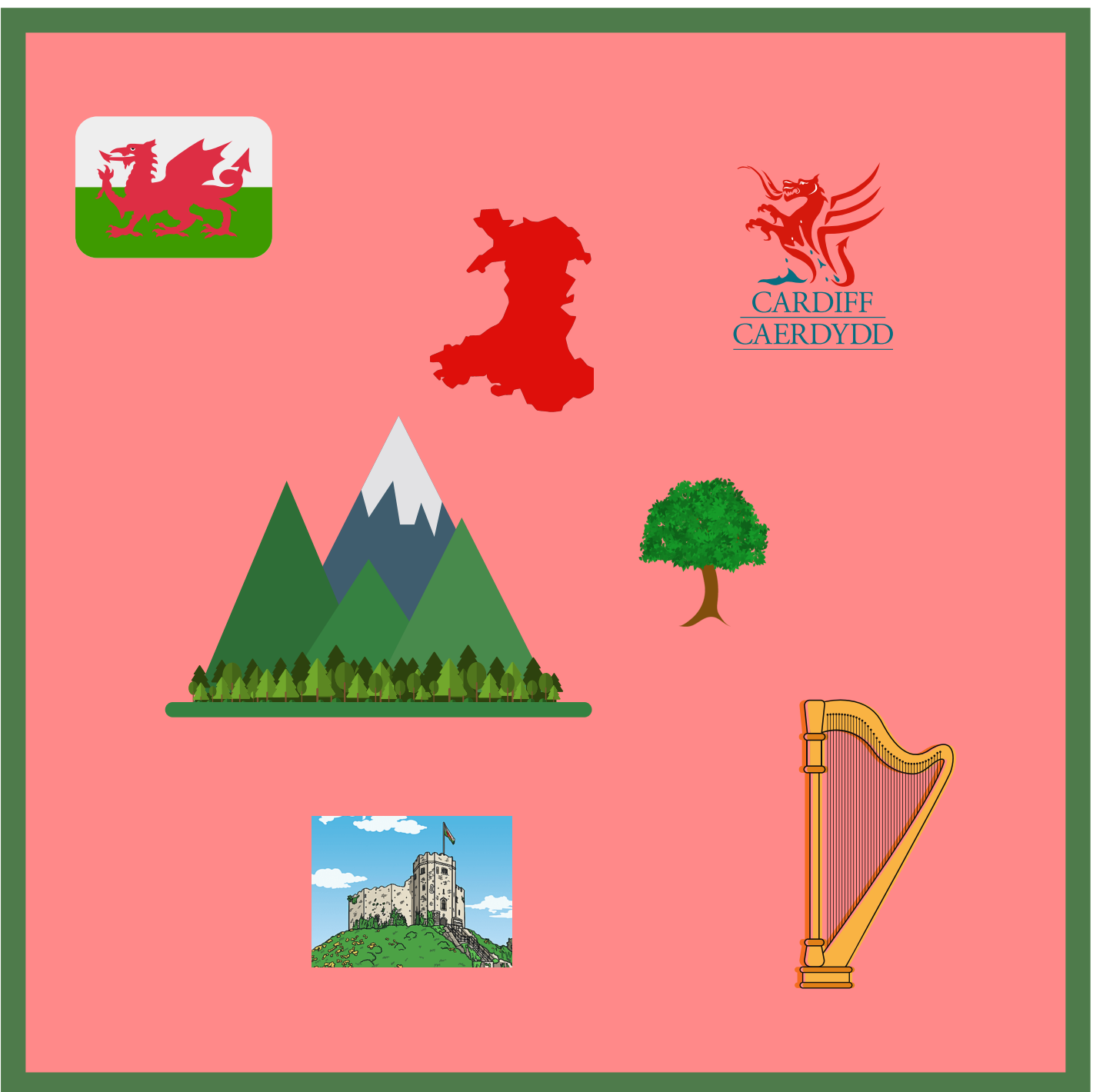


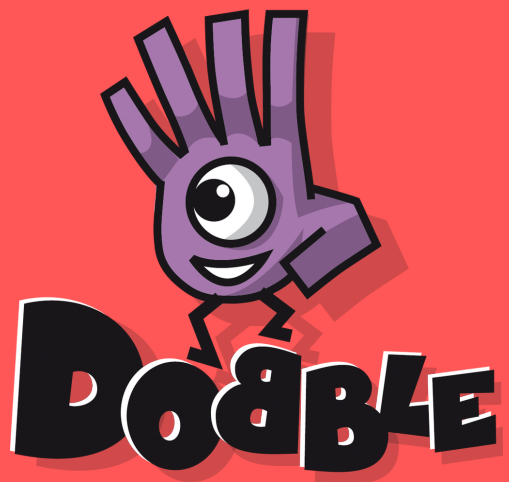
WALES
EDITION



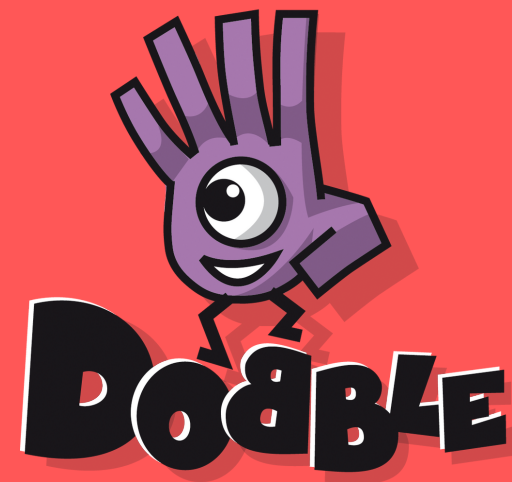
WALES
EDITION



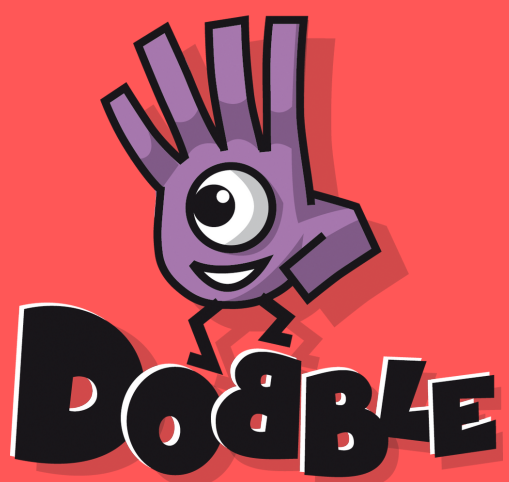




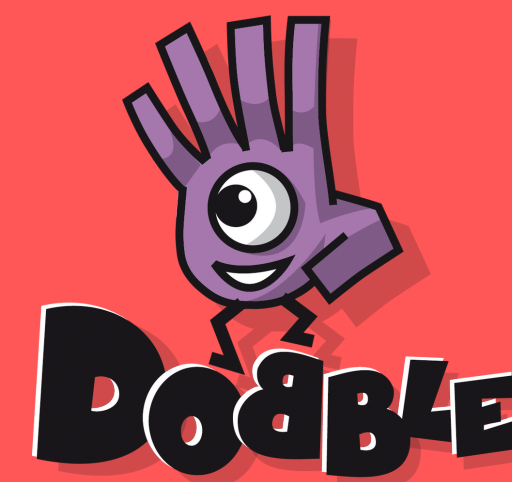
WALES
EDITION



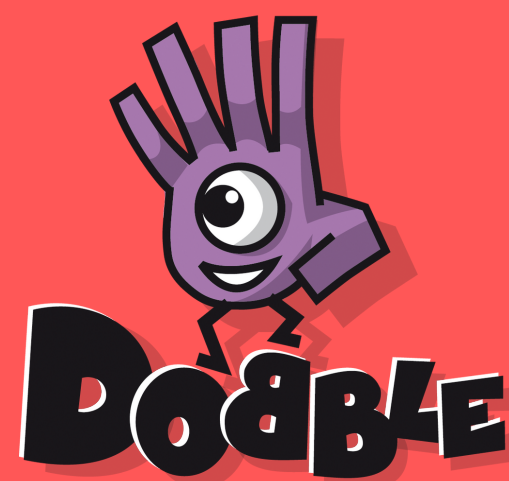
WALES
EDITION



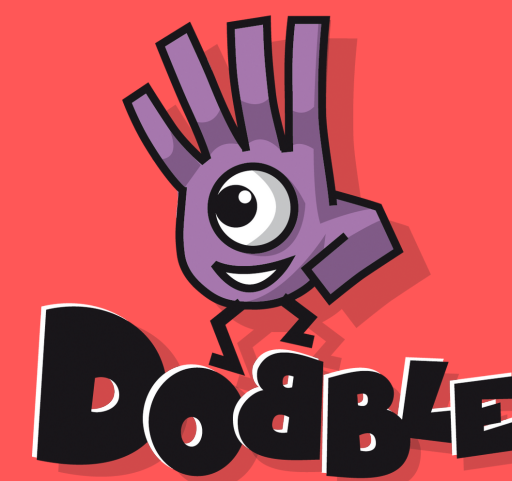
WALES
EDITION



WALES
EDITION



WALES
EDITION



WALES
EDITION



Teachers preparation instructions:

Level: Easy

Prep Time: 20 mins approx.

- Print the card pages double sided so that each card will have the logo on the back. (Standard A4 size in colour)
- Laminate the cards and cut out.
- Ask questions prior to the activity to see what they know about Wales.
- Before playing the game, read through the vocabulary list as a class and allow the students to spend about 10 minutes revising the vocabulary.

- (Optional) place the cards in a small box and print out the first page of the document to stick on the lid of the box and insert the rules inside.