

Funny Jeopardy

Start

Review Games

**Famous
landmarks**

10 Points

20 Points

30 Points

40 Points

**Important
people**

10 Points

20 Points

30 Points

40 Points

Festivals

10 Points

20 Points

30 Points

40 Points

**English
culture**

10 Points

20 Points

30 Points

40 Points



Previous



Next



Famous Landmarks

1

2

3

4



Previous



Next



1) What's the name of this
Landmark?





Previous



Next



1) What's the name of this Landmark?



The Eiffel Tower (Paris)





Previous



Next



If your answer is correct,
you win 10 Points!





Previous



Next



2) What's the name of this Landmark and where is located?



a) London Eye (London)

b) London Market (London)

c) Big Ben (London)

d) Big Ben (Manchester)



Previous



Next



2) What's the name of this Landmark and where is it located?



C) Big Ben (London)





Previous



Next



If your answer is correct,
you win 20 Points!



Previous



Next



3) Can you say the name of this
Landmark? You have 30 seconds...







Previous



Next



3) Can you say the name of this
Landmark? You have 30 seconds...



COLOSSEUM





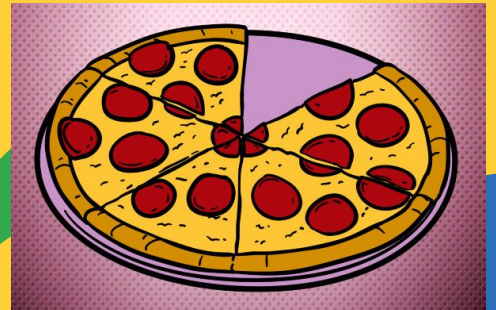
Previous



Next

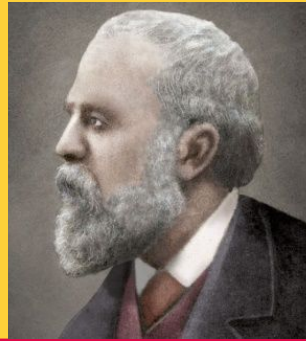


If your answer is correct,
you win 30 Points!





Previous



Next

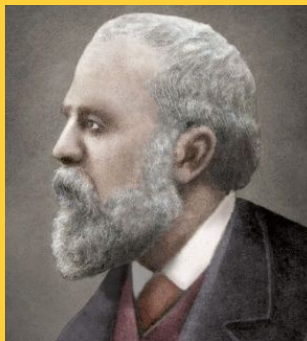


4) Say the name of these 3 Catalan Landmarks





Previous



Next



4) Say the name of these 3 Catalan Landmarks

a) Parc de la Ciutadella, Sagrada Família and Casa Rovira

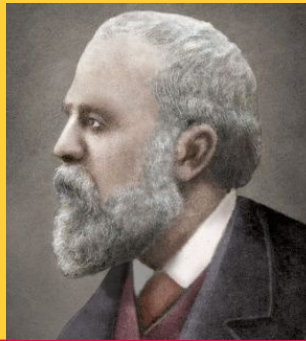
b) Parc Güell, Casa Batlló and Sagrada Família

c) Basílica de Montserrat, Parc Güell and Casa Fuster

d) Sagrada Família, Palau Güell and Parc Güell



Previous



Next



4) Say the name of these 3 Catalan Landmarks

b) Parc Güell, Casa Batlló and Sagrada Família





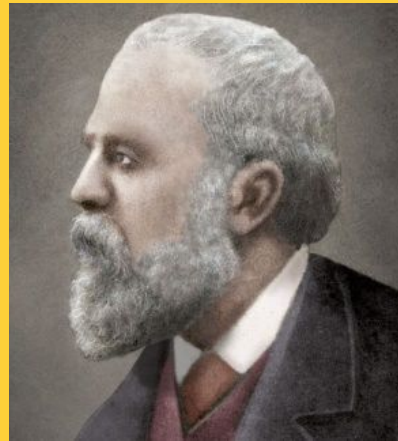
Previous



Next



If your answer is correct,
you win 40 Points!





Previous



Next



Famous people

1

2

3

4



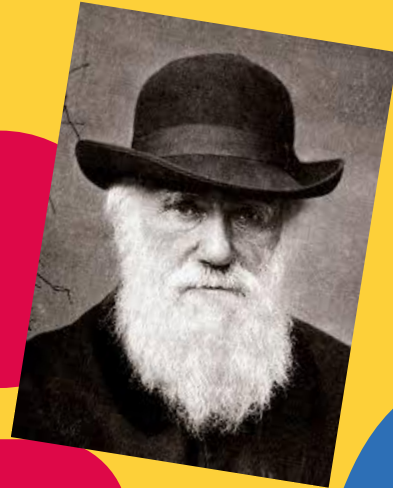
Previous



Next



1) Who was Charles Darwin?



a) The scientist who found the mammals evolution

b) An important writer

c) The scientist who found the natural evolution theory

d) He was the best English singer ever



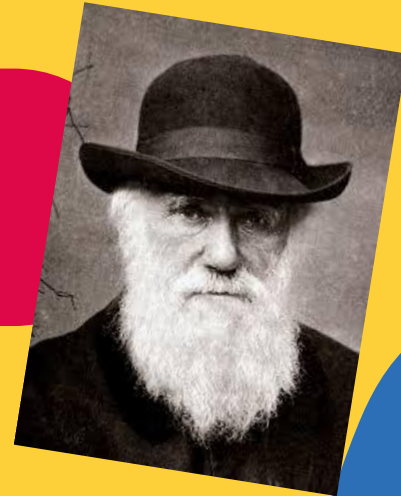
Previous



Next



1) Who was Charles Darwin?



**c) The scientific who found
the natural evolution theory**



Previous



Next



1) Who was Charles Darwin?



If your answer is correct,
you win 10 Points!





Previous



Next



2) Who is Calvin Harris?

a) An actor

b) A chef

c) A writer

d) A singer



Previous



Next



2) Who is Calvin Harris?



d) A singer and a composer



Previous



Next



If your answer is correct,
you win 20 Points!



Previous



3) Who is Lady Gaga?

a) An actress and singer

b) A scientist

c) An acrobat

d) A journalist



Previous



Next



3) Who is Lady Gaga?

a) An actress and singer





Previous



Next



3) Who is Lady Gaga?



If your answer is correct,
you win 30 Points!



Previous



4) Who is "Malala"?

a) A blogger, an activist and a student

b) A student and an actress

c) A famous writer

d) An artist



Previous



4) Who is "Malala"?



a) A blogger, an activist and a student



Previous



Next



4) Who is "Malala"?



If your answer is correct,
you win 40 Points!



Previous



Next



English Culture

Learn about English
traditions

1

2

3

4



Previous



Next



1) What's the name of these London landmarks?





Previous



Next



London Eye, London Bridge and
The Buckingham Palace



If your answer is correct,
you win 10 Points!





Next



2. What is the popular English Breakfast made of?

a) Milk and cereals

b) Orange juice with avocado toast

c) A fried egg with potatoes and tea

d) Beans, bacon, egg, sausages and toast with a nice coffee or tea



Previous



Next



2. What is the popular English Breakfast made of?



d) Beans, bacon, egg, sausages and toast with a nice coffee or tea



Previous



Next



2) What is the popular English Breakfast made of?

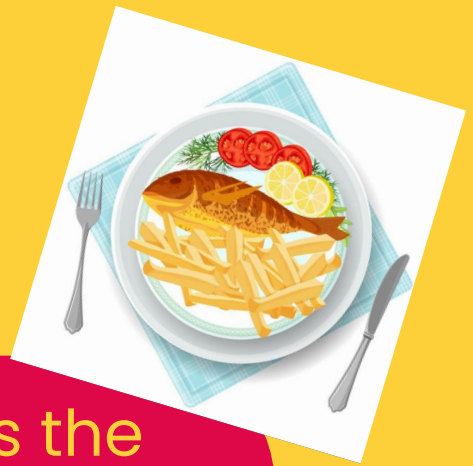


If your answer is correct,
you win 20 Points!





Previous



3) If you are in England...what's the typical food to eat?

a) Burger

b) Fish and chips

c) Paella

d) Carrot cake



Previous



Next



3) If you are in England...what's the typical food to eat?



b) Fish and chips



Previous



Next



3) If you are in England...what's the typical food to eat?

If your answer is correct,
you win 30 Points!





Previous



Next



4) Which are the common animals you can see on the English parks?



a) Squirrels and ducks

b) penguins and birds

c) Bears and frogs

d) Lions and foxes



Previous



Next



4) Which are the common animals you can see on the English parks?

a) **Squirrels and ducks**





Previous



Next



4) Which are the common animals you can see on the English parks?

If your answer is correct, you win 40 Points!





Previous



Next



Festivals

Learn about the English
Festivals

1

2

3

4



Previous



Next



1. When is Halloween?

a) It's on October 31th

b) It's the 1st of November

c) It's the 30 of October

d) It's the 2nd of November



Previous



Next



1. When is Halloween?

a) It's on October 31th





Previous



Next



1. When is Halloween?

If your answer is correct,
you win 10 Points!





Previous



Next



2. What do people do in Easter in England?

a) Easter Cake "Mona"

b) Families dressed up as a rabbit

c) They eat turkey and stuffing

d) Families find Easter eggs on the parks and in their gardens



Previous



Next



2. What do people do in Easter in England?



d) Families find Easter eggs on the parks and in their gardens



Previous



Next



2. What do people do in Easter in England?



If your answer is correct,
you win 20 Points!



Previous



Next



3. What are the main important dishes to celebrate Thanksgiving Day?

a) Soup with garlic bread

b) Fries and pizza

c) Chicken and mashed potatoes

d) Turkey, stuffing and mashed potatoes



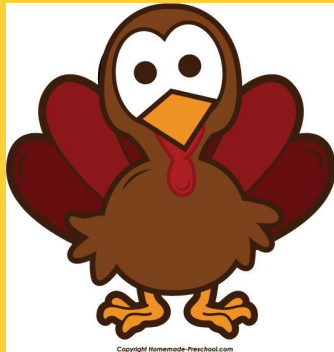
Previous



Next



3. What are the main important dishes to celebrate Thanksgiving Day?



d) Turkey, stuffing and mashed potatoes



Previous

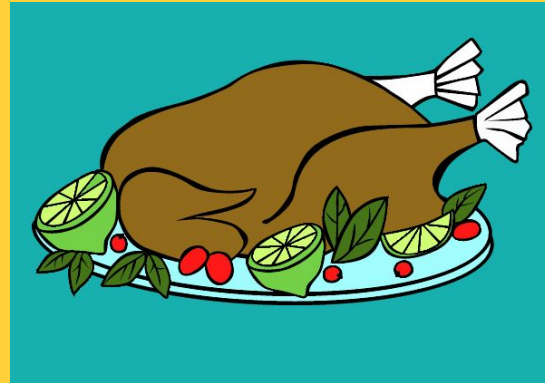


Next



3. What are the main important dishes to celebrate Thanksgiving Day?

If your answer is correct, you win 30 Points!





Previous



Next



4. How do people dress up to celebrate Saint Patrick's Day?

a) With yellow and blue clothes

b) Green, red and purple clothes

c) White, black and blue clothes

d) Green clothes with white and orange decorations



Previous



Next



4. How do people dress up to celebrate Saint Patrick's Day?

d) Green clothes with white and orange decorations





Previous



Next



4. How do people dress up to celebrate Saint Patrick's Day?



If your answer is correct,
you win 40 Points!